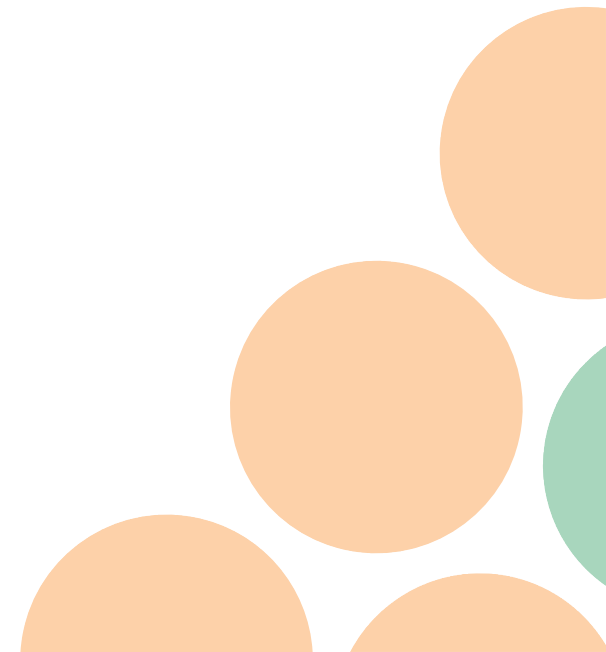


# SORTING MANUAL

## Paljassaare Harbour

- Hazardous waste
- Recyclable waste and packaging
- Organic waste
- Mixed domestic waste and non-recyclable waste
- Other waste



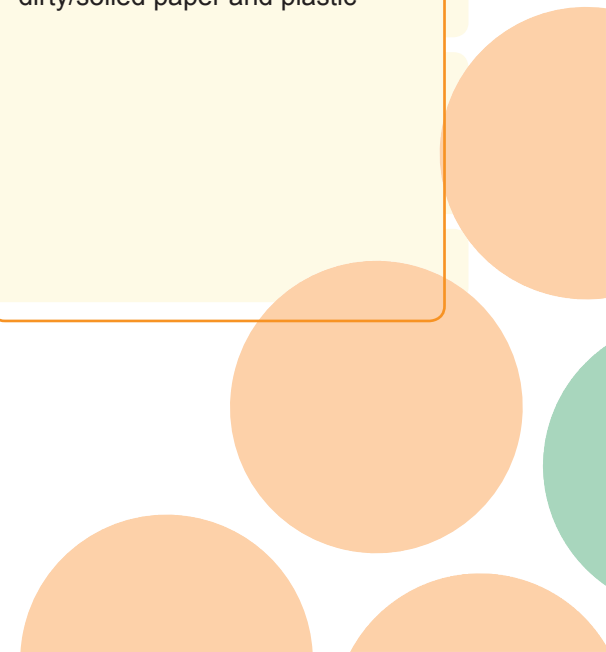
# Hazardous waste

Hazardous waste must be collected in special containers separately from other waste.

WASTE TYPE	HOW WASTE IS HANDED OVER	HOW WASTE IS RECIEVED	DO NOT MIX WITH
oily rags	200 l drum	common container	mixed domestic waste recyclable and packaging waste electrical and electronic equipment waste furniture cooking oil and organic waste
paint, varnishes, solvents	closed drum		
photographic chemicals and detergents	closed drum		
batteries and accumulators	cardboard box		
lamps, fluorescent and energy saving light	cardboard box		
oil and solid sludge	200l - 1000l drum		
medicines and other medical waste	hermetical plastic bag		

# Recyclable waste and packaging

WASTE TYPE	HOW WASTE IS HANDED OVER	HOW WASTE IS RECEIVED	DO NOT MIX WITH
cardboard and boxes	compacted bales, waste bags	common container	organic waste hazardous waste mixed domestic waste electrical and electronic equipment waste furniture dirty/soiled paper and plastic
waste paper (newspapers, magazines, etc.)	compacted bales, waste bags		
glass	big-bag, waste bags		
plastic wrappers	waste bags, big-bag		
plastic boxes and bottles	big-bag, waste bags		
metalwork	on the basis of a separate order		
pallets and other waste timber	on the basis of a separate order		
tins	compacted bales, waste bags		
cooking oil	closed drum		



## Organic waste

WASTE TYPE	HOW WASTE IS HANDED OVER	HOW WASTE IS RECIEVED	DO NOT MIX WITH
food waste	biodegradable plastic bags	container	hazardous waste, mixed domestic waste, electrical and electronic equipment waste, furniture, dirty/soiled paper and plastic

## Mixed domestic waste and non-recyclable waste

WASTE TYPE	HOW WASTE IS HANDED OVER	HOW WASTE IS RECIEVED	DO NOT MIX WITH
mixed domestic waste	waste bags	container	organic waste packaging recyclable waste and packaging
sorting leftovers (dirty/soiled paper and cardboard, dirty/soiled plastic and wrapper; ropes, etc.)	waste bags		
pottery and porcelain (tablew are, vases, ash-trays, etc)	cardboard boxes		

# Other waste

WASTE TYPE	HOW WASTE IS HANDED OVER	HOW WASTE IS RECIEVED	DO NOT MIX WITH
construction waste	preliminary, coordinated with the waste manager	on the basis of a separate order	hazardous and domestic waste
electrical and electronic equipment waste	on pallets		

