

PORT OF  TALLINN
The Port of Good News

Cargo



Containers • Ro-Ro • General Cargo • Dry Bulk • Liquid Bulk • Developments



Muuga Harbour, the biggest cargo harbour in Estonia, was established in 1986 and has been one of the most important engines of Estonian trade and transit for a quarter of a century by now.



Port of Tallinn	5
Containers	10
Ro-Ro Cargo	13
General Cargo	16
Dry Bulk	18
Liquid Bulk	21
Liquid Bulk Development	24
Development areas for logistics and production units	26
Contact	27

This booklet is subject to alteration.
Up to date information is always available at
www.portoftallinn.com

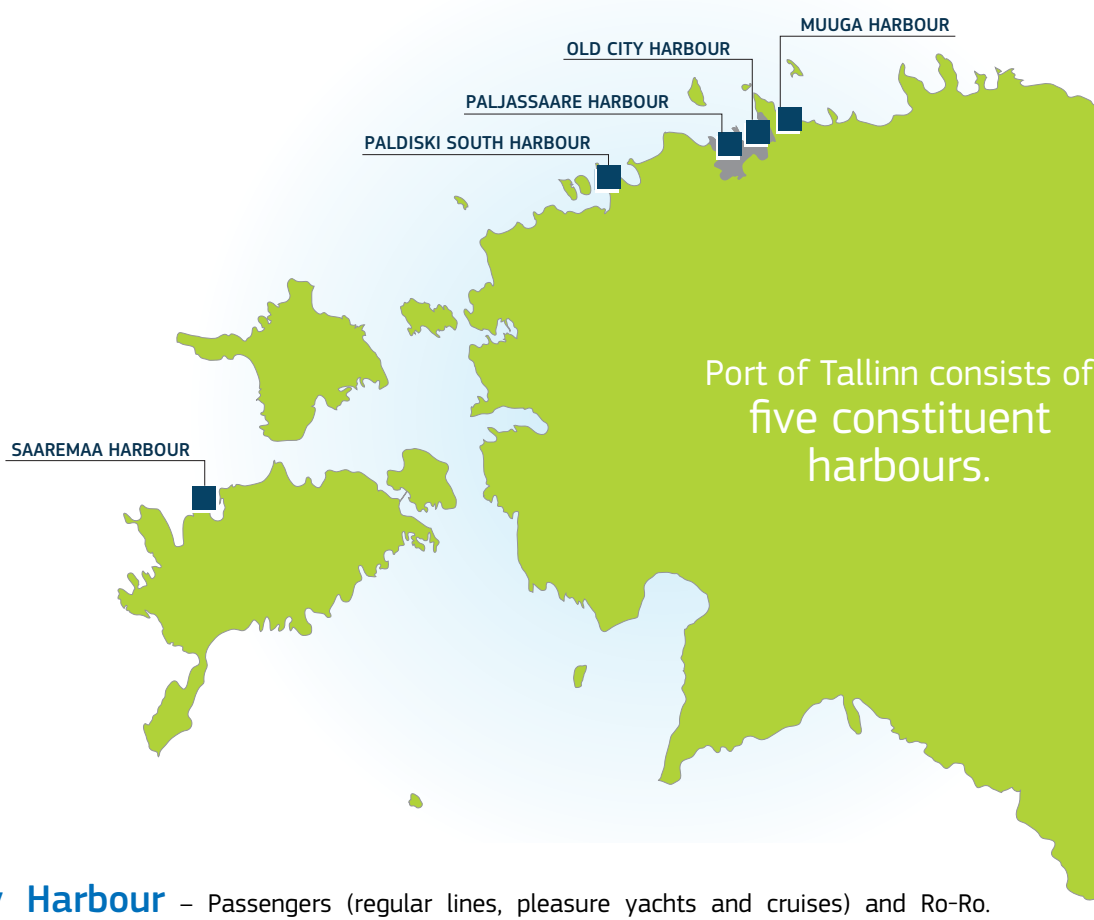
Old City Harbour is one of the largest and busiest passenger harbours in the Baltic Sea region. It is also the biggest passenger harbour for both Port of Tallinn and Estonia.



Port of Tallinn

Port of Tallinn is the largest port authority in Estonia, and considering both cargo and passenger traffic, also the largest port on the shores of the Baltic Sea.

Port of Tallinn is a state-owned limited liability company operating as a landlord port.



Old City Harbour – Passengers (regular lines, pleasure yachts and cruises) and Ro-Ro. The Old City Harbour is predominantly a passenger harbour. At present the Old City Harbour processes mainly Ro-Ro cargo carried by passenger liners and Ro-Ro vessels.

Muuga Harbour – Containers, solid bulk goods (coal, fertilisers, cereal grains, scrap iron, gravel etc), liquid bulk goods, general cargo (break bulk cargo), Ro-Ro.

Paldiski South Harbour – General cargo/break bulk cargo, solid bulk goods, liquid bulk goods, Ro-Ro. The strategic focus has been shifted to the handling of rolling stock goods and to the processing of Estonian import-export goods as well as handling various goods passing through Estonia as transit. A rising trend is the carriage and pre-sales service of the new passenger cars.

Paljassaare Harbour – General cargo/break bulk cargo, solid bulk goods, liquid bulk goods. Paljassaare Harbour is a cargo harbour handling break bulk cargo, coal and oil products as well as timber and perishables.

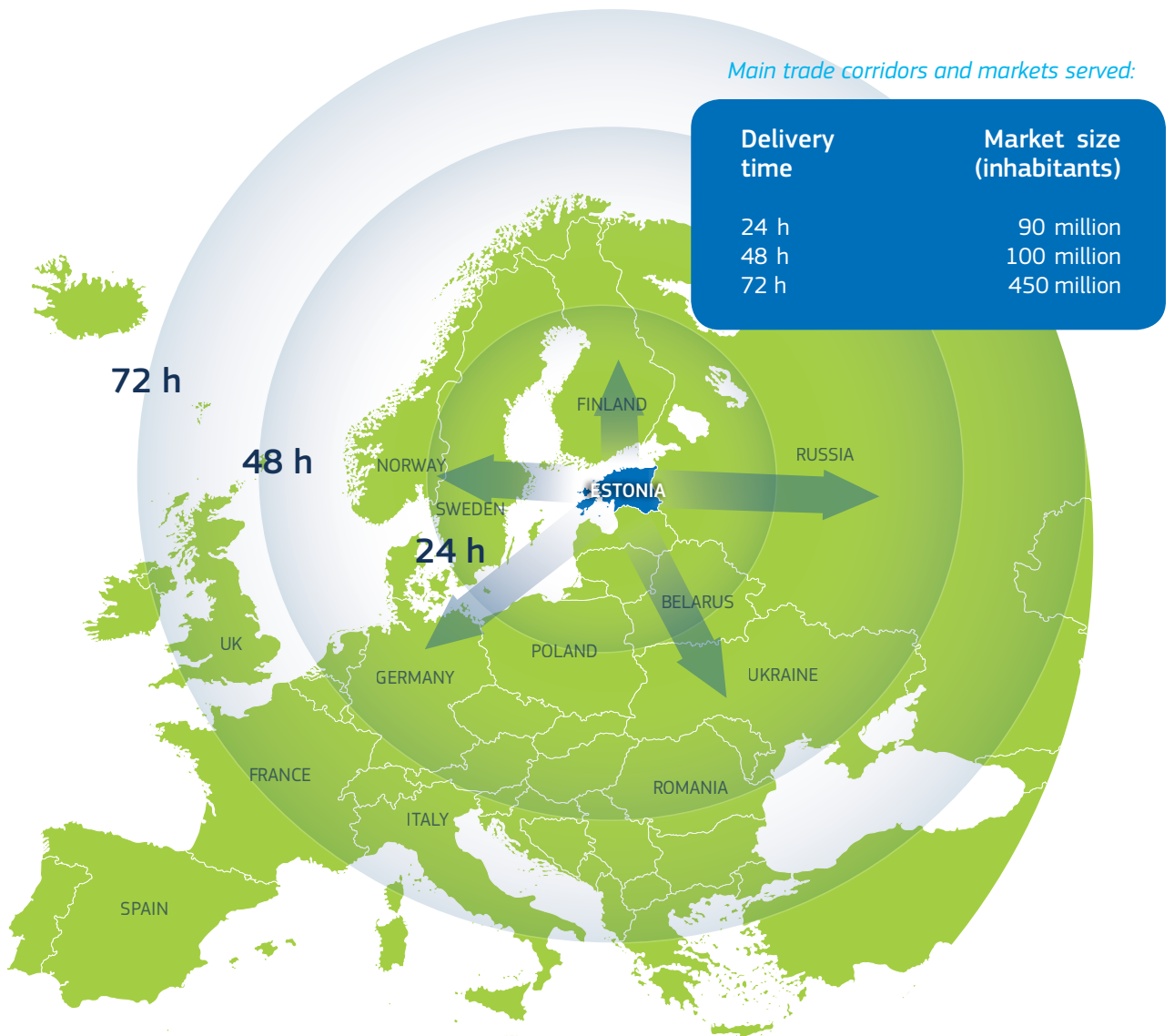
Saaremaa Harbour – Passengers (recreational and pleasure crafts, cruises). The Harbour has been designed to predominantly process the passenger vessels.

Historical trade routes to Europe and Russia

Historically the Baltic Sea region has acted as a major transport corridor on both local and global scale: during the Middle Ages the Hanseatic League, uniting towns around the Baltic Sea, formed the most dominating trading bloc in the world. Estonia has been a transit gateway for the East-West as well as the North-South connections for ages.

Unique geographic position

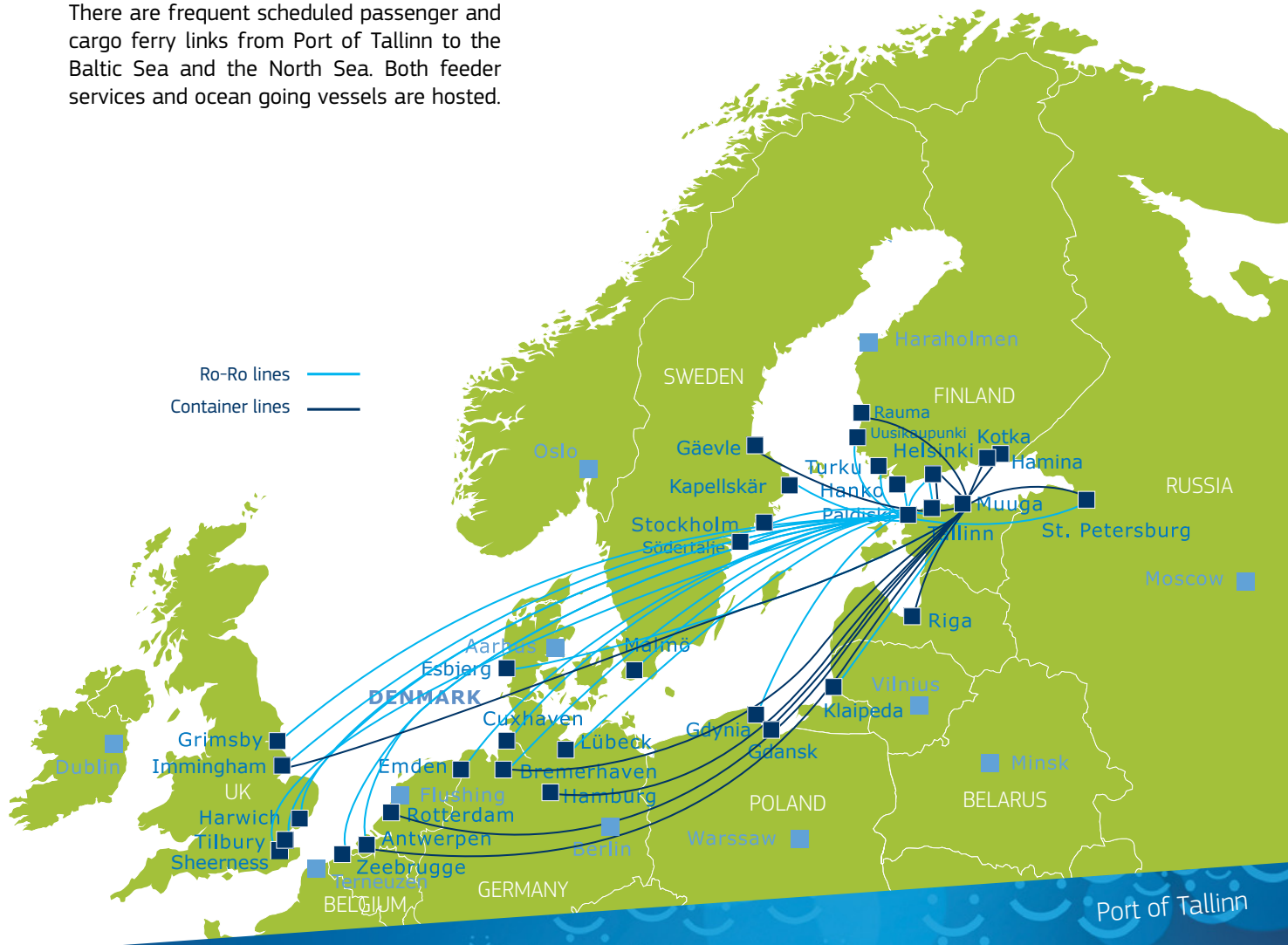
With its location on the eastern coast of the Baltic Sea, Estonia is ideally placed for cargo transshipments between the East and West.





Regular sea connections

There are frequent scheduled passenger and cargo ferry links from Port of Tallinn to the Baltic Sea and the North Sea. Both feeder services and ocean going vessels are hosted.



Excellent hinterland connections

Port of Tallinn is well integrated into the road and rail network with links heading east, west and south through Estonia.

Estonian-Russian border is only about 270 km from Paldiski South Harbour and about 220 km from Muuga Harbour by rail. Estonia's railway system is directly connected to the Russian ones and to those of other CIS countries.

The only regular container block train to Moscow in Baltic States and Finland connects Muuga Container Terminal with Moscow on frequent basis.



Road network

In terms of density and quality, Estonian road network can be compared to that of the Nordic countries.

Main routes connect Estonia with Russia (St. Petersburg region and Moscow) in the east and with Latvia in the south. Via Baltica connects Central and Northern Europe with the Baltics.

Main road and railway connections:



Ideal natural conditions

All five harbours of the Port of Tallinn are practically ice-free, 100% navigable all year round and easily approachable with depths of up to 18 meters, enabling them to receive all vessels able to pass through the Danish Straits.

Well-developed infrastructure

Companies operating in the port are equipped with modern infrastructure, superstructure and technology – there are deep-water berths, secure warehouses (including cold stores), open storage areas, free zone, new equipment and machinery and easily accessible rail and road links at their disposal.

Highest quality and environmental concern

Lloyds Register Quality Assurance and Bureau Veritas Certification have declared the management system of Port of Tallinn to be in full compliance with the requirements of the international quality management standard ISO 9001:2008 and the environmental management system standard ISO 14001:2004 enabling to ensure the well-being of all its clients and the surrounding society.

Focus on safety

All port facilities have security plans approved by the national maritime authority and are compliant with ISPS requirements.

European service standard

The companies of the Port community are providing a wide variety of services related to cargo handling and marine business 24/7; the services are on par with the highest EU service and quality standards. All major European and global logistics companies are represented in Estonia.

Free zone

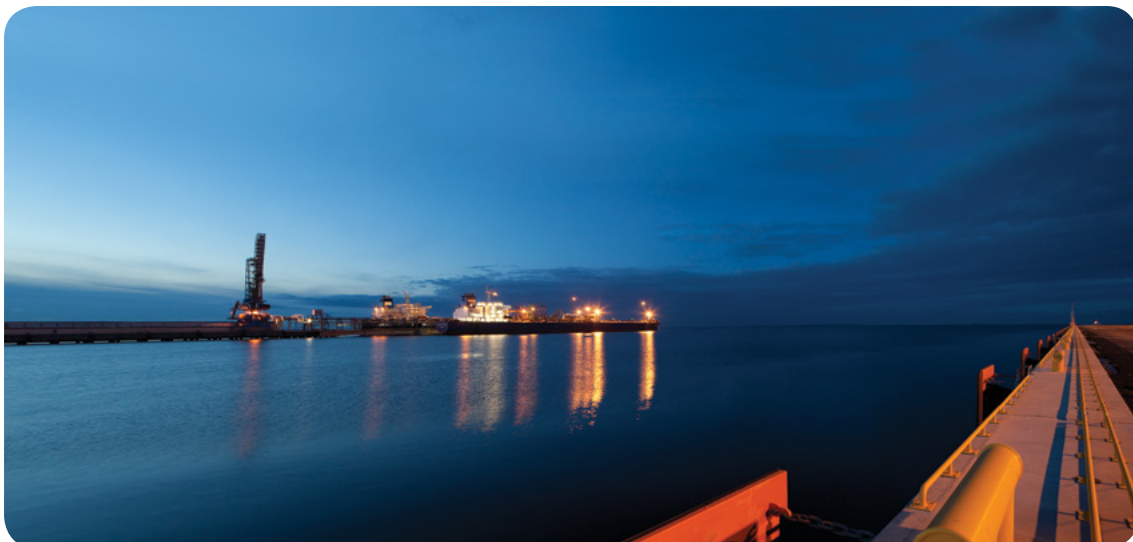
Muuga Harbour has a free zone status. This means no custom procedures within the zone and simplified procedures for transit.

Land availability

In terms of land availability for expansion, Port of Tallinn possesses the greatest development potential in the entire region.

Competitive prices

Port of Tallinn has the best quality-price ratio in the Baltic Sea region with clear and easy pricing.



www.portoftallinn.com/containers



Containers

Container terminal:

- Capacity about **800 000 TEUs**
- **Terminal area** 55 ha
- **4 quays** with lengths respectively 219 m, 200 m, 298 m and 378 m and depth 12.4 - 14,5 m
- **Sheltered warehouses** 8000 m²
- **Reefer** container depot for 404 units
- **Loading equipment:** 3 Ship-to-Shore gantry cranes, 1 mobile crane, 6 Rubber Tyred Gantry cranes, Shuttle Carriers, Reach-Stackers, port trucks and multitrailers
- **Railway loading station** for 60 railcars equipped with Rail Mounted Gantry crane

Weekly operated container routes:

Operator:	Route:	Representative:
CMA CGM	Muuga – St. Petersburg – Hamburg – Rotterdam – Hamburg – Muuga	CMA CGM Estonia
Hapag-Lloyd	Muuga – Klaipeda – Hamburg – Bremerhaven – Riga – Muuga	Ookeani Konteineravedude OÜ
Maersk Line / Seago Line	Gdansk – Muuga – Klaipeda – Gdansk – Ust Luga – Riga – Gdansk	Maersk Eesti AS
MSC	Muuga – Kotka – Hamina – Helsinki (Vuosaari) – Antwerpen – Bremerhaven – Muuga	MSC Eesti AS
Sea Connect	Muuga – Peterburi – Hamburg – Rotterdam – Muuga	SCS Estonia OÜ
Team Lines	Muuga – Kotka – Bremerhaven – Hamburg – St. Petersburg – Muuga	Team Lines Estonia OÜ
Tschudi Lines Baltic Sea Finbest	Muuga – Helsinki – Klaipeda-Esbjerg – Immingham – Rotterdam – Helsinki (Vuosaari) – Muuga	Tschudi Logistics AS
Unifeeder Container Service	Muuga – Bremerhaven – Hamburg – Helsinki (Vuosaari) – Muuga	Pirita Marine OÜ
X-Press Container Line	Muuga – Rotterdam – Kotka – Helsinki – Muuga	Approve OÜ

* The list has been provided as of June 2014. Up to date information is always available at www.portoftallinn.com.

Representatives:**CMA CGM Estonia OÜ**

Tammsaare Business Centre
 Tammsaare tee 47 – A4, 5th Floor
 11316 Tallinn
 Ph: +372 666 0540, fax: +372 666 0549
 E-mail: tln.genmbox@cma-cgm.com
www.cma-cgm.com

Team Lines Estonia OÜ

Pärnu mnt 141, 11314 Tallinn
 Ph: +372 605 4645, fax: +372 605 4648
 E-mail: info@teamlines.ee
www.teamlines.de

MSC Eesti AS

Ahtri 6A, 10151 Tallinn
 Ph: +372 666 3888, fax: +372 666 3899
 E-mail: info@tll.mscestonia.com
www.mscestonia.com

Tschudi Logistics AS

Sadama 4, 10111 Tallinn
 Ph: +372 640 9751, fax: +372 640 9786
 E-mail: estonia@tschudilogistics.com
www.tschudilogistics.com

Pirita Marine OÜ (Unifeeder)

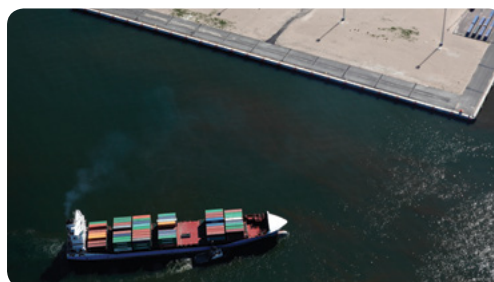
Pirita tee 20T, 10127 Tallinn
 Ph: +372 611 6606, fax: + 372 611 6609
 E-mail: info@pmarine.ee
www.pmarine.ee

SCS Estonia OÜ (Sea Connect)

Pirita tee 17, 11911 Tallinn
 Ph: +372 697 1988, fax: + 372 697 1989
 E-mail: info@scsestonia.ee
www.seaconnect.lt

Maersk Eesti AS

Järvevana tee 9, Tallinn 11314
 Ph: +372 679 9000, fax: + 372 679 9049
 E-mail: estsal@maersk.com
www.maerskline.com





Developments in Muuga Harbour

Container capacity (TEU)

2009	350 000
2011	450 000
2014	800 000

Muuga Harbour has a perfect location for container terminal with good connections to roads, railways and hinterland logistic terminals.

The new development of the terminal infrastructure completed in mid 2010 facilitating the capacity growth up to **800 000 TEUs**.

Alongside with new terminal development, hinterland terminals and logistic centers are developed granting smooth transshipment of containers.

There are regular container train connections to Russia (Moscow Express), Central Asia (Baltica Transit) and Ukraine (ZUBR).

More detailed information at www.evrcargo.ee

By using the newest technological and computerised systems container terminal can guarantee continued handling of vessels with a capacity of 55-60 units per hour, also handling of road transport in average within 30 minutes starting from arrival in the terminal until leaving.

Well elaborated technological schemes for handling railway platforms and well organised mutual work relations between railway and forwarding companies allows to depart container trains from the container terminal 24 h. These container trains travel without any failures and according to the schedules to Moscow or as route trains to the Central Asian countries.

Terminal operator:

Transiidikeskuse AS

Veose 16, 74115 Maardu

Ph: +372 631 9593, fax: +372 631 9113

E-mail: tk@tk.ee

www.tk.ee



Ro-Ro Cargo

Ro-Ro cargo handling is available in 3 constituent harbours of Port of Tallinn:
Old City Harbour, Muuga Harbour and Paldiski South Harbour.

Over 3.5 million tons (or correspondingly more than 1,000,000 units) of Ro-Ro traffic passes through the port in a year and the volume keeps growing constantly.

Port of Tallinn provides a wide range of services for every type of wheeled cargo:

- trailers and semitrailers;
- roll trailers and MAFIs, incl. containers on roll trailers;
- new passenger cars, trucks and buses;
- agricultural and building machinery.

Also, different kinds of project cargo and High&Heavy cargo are served by Ro-Ro lines which are calling our ports. Remarkable amounts of that kind of cargo and also heavy machinery are loaded to rail and forwarded to the Russian and Central Asian markets.

Port of Tallinn has the widest network of Ro-Ro lines in the Baltic States, with connections to ports in Finland, Sweden, Russia, Netherlands, Belgium, Germany and the UK.

Regularly operated Ro-Ro lines:

Operator:	Route:	Representative:
Eckerö Line	Tallinn (Old City Harbour) – Helsinki – Tallinn (Old City Harbour)	Eckerö Line AB OY Eesti filiaal
KESS	Paldiski – Hanko – Cuxhaven – Halmstad – Malmö – Paldiski	Scanrapid Eesti OÜ
KESS	Paldiski – St.Petersburg – Bremehaven – Paldiski	Scanrapid Eesti OÜ
Mann Lines	Paldiski – Turku – Bremerhaven – Harwich – Cuxhaven – Paldiski	Mann Lines OÜ
St.PeterLine	Tallinn – St.Petersburg – Helsinki – Stockholm – Tallinn	St.Peter Line Limited Eesti filiaal
Tallink	Paldiski – Kappelskär – Paldiski	Tallink Grupp AS
Tallink	Tallinn (Old City Harbour) – Helsinki – Tallinn (Old City Harbour)	Tallink Grupp AS
Tallink	Tallinn (Old City Harbour) – Mariehamn – Stockholm – Mariehamn – Tallinn (Old City Harbour)	Tallink Grupp AS
Transfennica	Paldiski – Hanko – Lübeck	Transfennica OÜ
Transfennica	Paldiski – Hanko – Antwerpen	Transfennica OÜ
Transfennica	Paldiski – Hanko – Antwerpen – Zeebrügge – Bilbao	Transfennica OÜ
Transfennica	Paldiski – Hanko – Tilbury	Transfennica OÜ
Transfennica	Paldiski – Hanko – Lübeck – St. Petersburg	Transfennica OÜ
Transfennica	Paldiski – Gdynia – Lübeck	Transfennica OÜ
Viking Line	Tallinn (Old City Harbour) – Helsinki – Tallinn (Old City Harbour)	Viking Line Eesti OÜ

* The list has been provided as of June 2014. Up to date information is always available at www.portoftallinn.com.

Transshipment of new cars

There are three terminals with a total of 25 ha terminal territory in Paldiski South Harbour to serve the volume of new cars transhipped through the port to the Estonian and the Baltic States markets and also to Russia.

The capacity for transshipment of new cars through Port of Tallinn is up to 300 000 units.

Storage, transportation by trucks and rail and also PDI and PPO services are rendered.

Port infrastructure is ready to serve regular Ro-Ro lines with new cars on board as well as PCC vessels.

Representatives:

Eckerö Line AB OY Eesti Filiaal

Sadama 25-2, 10111 Tallinn
Ph: +372 661 4714, fax: +372 661 4715
E-mail: company@eckeroline.ee
www.eckeroline.ee

MannLines OÜ

Rae põik 10, 76806, Paldiski
Ph: +372 679 1450, fax +372 679 1455
E-mail: mannlines@mannlines.ee
www.mannlines.ee

Scanrapid Eesti OÜ

Mõisa str. 4, P.O. Box 9, Tallinn
Ph: +372 633 8824, fax: +372 633 8967
E-mail: info@scanrapid.ee
www.scanrapid.ee

Tallink Grupp AS

Sadama 5/7, 10111 Tallinn
 Ph: +372 640 9800, fax: 640 9810
 E-mail: info@tallink.com
 www.tallink.com

Transfennica OÜ

Rae põik 10, 76806 Paldiski
 Ph: +372 631 8870, fax: +372 674 2422
 E-mail: info.paldiski@transfennica.com
 www.transfennica.com

Viking Line Eesti OÜ

Hobujaama 4, 10151, Tallinn
 Ph: +372 666 3966, fax: +372 666 3939
 E-mail: info@vikingline.ee
 www.vikingline.ee

Terminal operators:**PALDISKI SOUTH HARBOUR****Assistor AS** (new cars)

Rae põik 11, 76806 Paldiski
 Ph: +372 651 0888, fax: +372 651 0889
 E-mail: info@assistor.ee
 www.assistor.ee

ESTEVE Terminal AS (Ro-Ro, new cars)

Rae põik 10, 76806 Paldiski
 Ph: +372 654 1500, fax: +372 654 1502
 E-mail: esteve@esteve.ee
 www.esteve.ee

St. Peter Line Limited Eesti Filiaal

Viru väljak 2, Tallinn 10111
 Ph: +372 666 0809, fax: +372 666 0808
 E-mail: cargo.tallinn@stpeterline.com
 www.stpeterline.com

OLD CITY HARBOUR**HTG Invest AS** (Ro-Ro)

Uus-Sadama 19-13, 10120 Tallinn
 Ph: +372 631 8463, fax: +372 631 3034
 E-mail: htg@htg.tallink.com
 htg.tallink.com

ESTEVE Stevedoring OÜ (Ro-Ro)

Rae põik 10, 76806 Paldiski
 Ph: +372 654 1500, fax: +372 654 1502
 E-mail: esteve@esteve.ee
 www.esteve.ee

MUUGA HARBOUR**Transiidikeskuse AS**

(containers, Ro-Ro, general cargo)
 Veose 16, 74115 Maardu
 Ph: +372 631 9593, fax: +372 631 9113
 E-mail: tk@tk.ee
 www.tk.ee



www.portof tallinn.com/general-cargo

General Cargo

All our constituent harbours have an availability for the handling of general cargo, i.e. any break bulk cargo such as bags, cartons, cases, rates, and drums – either individually or in unitised or palletised loads.

Stevedoring companies operating in the harbours of Port of Tallinn are equipped with modern infrastructure, having sheltered warehouses, open storage areas, reefer warehouses, modern equipment and machinery, and easily accessible rail and road links at their disposal.

In addition to traditional stevedoring services, a variety of warehousing, consolidation and distribution(value-added) services (including packing, unpacking and repacking, combining of cargo for consolidated shipments, weighing services, etc.) are provided.

Free zone in Muuga Harbour grants more **flexible customs procedures** for the companies rendering transit and distribution services. Simplified customs procedures, easy transfer of ownership rights and value-added operations allowed in the zone are designed to promote the development of distribution centres. **No import VAT** is applied to goods imported to be processed and exported from Estonia.

Warehouses:**Storage area (m²)
/Capacity (tons)**

Covered	150 000 m²
Opened	345 000 m²
Reefer warehouse	6 900 m² /up to 13 000 tons

Terminal operators:**MUUGA HARBOUR**

ArcelorMittal Tallinn OÜ (product of hot dipped galvanized steel sheet in coils, warehousing and logistic of metal products)
Koorma 5, 74115 Maardu
Ph: +372 605 6600, fax: +372 605 6601
E-mail: amt.info@arcelormittal.com
www.arcelormittal.com/tallinn

Komer AS (general cargo, warehousing)
Virna 6, 74115 Maardu
Ph: +372 631 9542, fax: +372 631 9033
E-mail: bn@komer.ee
www.komer.ee

MTT AS (general cargo, warehousing)
Vilja 5, Muuga port, 74115 Maardu
Ph: +372 631 9446, fax: +372 631 9447
E-mail: info@mtt.ee
www.mtt.ee

ITT Baltic OÜ
(general cargo, warehousing)
Vilja 1, 74004 Muuga Harbour
Ph: +372 631 9453
E-mail: info@informtt.com
www.informtt.ee

Transiidikeskuse AS
(containers, Ro-Ro, general cargo)
Veose 16, 74115 Maardu
Ph: +372 631 9593, fax: +372 631 9113
E-mail: tk@tk.ee
www.tk.ee

Sankotrans AS

(general cargo, warehousing)
Hoidla tee 4, 74115 Maardu
Ph: +372 631 9735, fax: +372 631 9489
E-mail: info@sankotrans.ee
www.sankotrans.ee

Tridens AS (warehousing)

Lõõtsa 2, 11415 Tallinn
Ph: +372 603 1800, fax: +372 603 1801
E-mail: info@tridens.ee
www.tridens.ee

Katoen Natie (general cargo)

Klaukse 1, 74114 Jõelähtme County
Ph +372 7833 000, fax +372 7833 001
E-mail: mart.melles@katoennatie.com
www.katoennatie.com

PALDISKI SOUTH HARBOUR

ESTEVE Terminal AS (general cargo, stevedoring & warehousing)
Rae põik 10, 76806 Paldiski
Ph: +372 654 1500, fax: +372 654 1502
E-mail: esteve@esteven.ee
www.esteve.ee



www.portoftallinn.com/dry-bulk

Dry Bulk

The volume of dry bulk cargo passing through Port of Tallinn annually comprises mostly transit cargoes, e.g. fertilizers from Russia, coal and grain from Russia and Kazakhstan..

Also, noteworthy amounts of scrap metal are handled, both as export and as transit flows. There are several dry bulk terminals in Port of Tallinn, each offering its own advantages and special capabilities. Transit bulk cargoes are mainly processed in Muuga Harbour, whereas Estonian export of dry bulk is mainly handled in Paldiski South Harbour.



Dry Bulk:

Terminal capacity (tons)

Coal	7 500 000
Fertilizers	2 300 000
Grain	5 000 000

Fertilizers

Fertilizers are mainly transported by rail from the main fertilizer producers in Russia for onward shipment by sea to Central, South and North America, Europe, Asia, Africa, and Australia.

Stevedoring, storage, transport and forwarding services, also value added services like blending and bagging are provided using modern and environmentally friendly technology.

Covered storage capacity for bulk cargo (mineral fertilizers) enables to store up to **165 000 tons in total (17.185 m²)**. The additional storage capacity 27 000 tons as built in 2013.

Coal

A dedicated coal terminal (Muuga Coal Terminal) with the capacity of 5 to 5.5 million tons a year renders a wide spectre of high quality services on composition of optimal logistical chain from consigner to the end consumer, including also stevedoring services of the terminal.

Up to 350 000 m³ of coal can be stored simultaneously. Coal is also transhipped by Stivis operating in Muuga Harbour.

Grain

With the silo capacity of 300 000 tons, the grain terminal in Muuga Harbour is **the largest grain terminal in the Baltic Sea region** and one of the largest in the world. The terminal is designed and established for transit grain cargo handling with the inbound turnover capacity of **5 million tons and outbound of 2-3 million tons a year.**

Two deep-water berths of the terminal permit to receive vessels of up to 120 000 dwt. The 48 silos provide for vessel handling irrespective of the railcar supply and for intermediate storage of different types of grain cargo. Also, grain cleaning and laboratory analyses are carried out in the terminal.

Scrap metal

Scrap metal processing is mainly performed in **Paldiski South Harbour**. Estonia's export and also transit volumes are transported to the port by rail and land vehicles.

A large part of scrap metal is reloaded as inner port transit, where metal transported to the harbour on board of small vessels is reloaded to big vessels.

Value added services (sorting, pressing, mixing, etc) are available for the reprocessing of scrap metal.

Other

In addition to the aforementioned four major dry bulk cargo groups, **gravel, peat, wood pellets and other dry bulk cargoes** are transported through Port of Tallinn.

Terminal operators:

MUUGA HARBOUR

Coal Terminal AS (coal)

Hoidla tee 15, 74115 Maardu
Ph: +372 602 6200, fax: +372 602 6210
E-mail: info@coalterminal.ee
www.coalterminal.ee

DBT AS (fertilizers)

Koorma 13, 74115 Maardu
Ph: +372 631 9389, fax: +372 631 9189
E-mail: dbt@btmuuga.ee
www.dbtmuuga.ee

MGT Muuga Grain Terminal AS

(grain)
Maardu tee 57, 74115 Maardu
Ph: +372 631 9232, fax: +372 631 9179
E-mail: mgt@mgt.ee
www.mgt.ee

Stivis AS (coal, peat, gravel and others)

Koorma 1, 74115 Maardu
Ph: +372 600 3872, fax: +372 600 3873
E-mail: stivis@stivis.ee
www.stivis.ee

PALDISKI SOUTH HARBOUR

ESTEVE Terminal AS

(scrap, peat, gravel, wood pellets and others)
Rae põik 10, 76806 Paldiski
Ph: +372 654 1500, fax: +372 654 1502
E-mail: esteve@estee.ee
www.estee.ee

Kuusakoski AS (scrap)

Betooni 12, 11415 Tallinn
Ph: +372 625 8600, fax: +372 601 2745
E-mail: firma@kuusakoski.ee
www.kuusakoski.ee





Liquid Bulk

The capacity of oil products handled at Port of Tallinn makes up a notable amount of the total product capacity of the port.

The proximity to Russia and the infrastructure of harbours enable the terminals to offer good transit conditions for liquid oils from Eastern Europe to Western Europe, America, and Southeast Asia. The terminals have a good railway connection with Estonian Railways as well as Russian Railways.

The Port of Tallinn is processing oil and oil products at Muuga Harbour and Paldiski South Harbour. The transit of oil products is concentrated mainly to Muuga Harbour, where three large liquid bulk storage and transshipment terminals are located: Vopak E.O.S., Vesta Terminal Tallinn and Oiltanking. In addition to the aforementioned, Neste Eesti and Nynas terminals are operating at Muuga Harbour. Alexela Terminal is processing oil products in Paldiski South Harbour.

The handling of oil products is performed at Muuga Harbour on nine berths, the longest and the deepest berth being 340 m long and 18 m deep. This berth enables to receive and load vessels with the deadweight exceeding 300 000 tons. The tank park of liquid products at Muuga Harbour exceeds 1.55 million m³. The loading speed of oil products is up to **8000 tons of cargo per hour**. The handling of oil products is performed at Paldiski South Harbour on two berths: berth no 1 – length 193 m, depth 12.0 m and berth no 7 – length 249 m, depth 13.5 m. The tank park of liquid products at Paldiski South Harbour amounts to 345 900 m³ and the tank park of LPG is 12 000 m³.

Liquid bulk terminal capacities:

	Tank park (m³)
Muuga Harbour	1 550 150
Paldiski South Harbour	357 900
Total:	1 908 050

Of processed goods, the heavy fuel oil makes up the largest share – up to 80% of the total volume processed, and 10% of the total volume amounts to the light petroleum products and 10% to other liquid bulk.

Value Proposition

- Express rail transportation, advanced technologies for discharging rail tank cars and quick loading of vessels in the ice free ports result in the shortest transshipment times and most efficient routes in the region.
- Depth at the quays allows to load and discharge vessels up to VLCC loaded until 18 m draft (or up to 15 m draft limitation at the Danish Straits which is equal to VLCC intake up to 170 000 tons).
- Unique value added services and high flexibility of the terminals enable customers to trade globally in wide variety of oil products.
- Modern technologies used and various control systems enable to maintain the highest operational performance standards.
- Application of specific techniques in order to guarantee safety of all processes and to preserve the required quality of products.

Terminal operators:**MUUGA HARBOUR****AS Vopak E.O.S.**

Crude oil, light oil products and fuel oil
Storage capacity 1,026,000 cubic metres

Vopak E.O.S. is a joint venture established by Royal Vopak (Netherlands) and Global Ports. Global Ports is a leading container and oil products terminal operator in Russia and the Baltics, respectively, by gross throughput. Royal Vopak is the world's largest independent terminal operator, owning 80 terminals in 31 countries.

Vopak E.O.S. terminals are located at Muuga Harbour and in the proximity of the harbour, at Maardu and Iru.

Address: Regati pst. 1, 11911 Tallinn, Estonia
 Telephone: +372 6266 100;
 Fax: +372 6313 096
 E-mail: info@vopakeos.com
www.vopakeos.com

OÜ Vesta Terminal Tallinn

Crude oil, light oil products and fuel oil
Storage capacity 405,000 cubic metres

Vesta Terminal Tallinn is owned by Mercuria Energy Asset Management BV, which in turn is part of the Mercuria Energy Group. Mercuria Energy Group is one of the world's largest trading companies.

Vesta Terminal Tallinn terminals are located at Muuga Harbour.

Address: Õli 3, 74115 Maardu, Estonia
 Telephone: +372 6 319 861;
 Fax: +372 6 319 949
 E-mail: tallinn@vestaterminal.ee
www.vestaterminals.com



AS Oiltanking Tallinn

Light oil products and petroleum chemicals
Storage capacity 78,550 cubic metres

Oiltanking Tallinn is owned by Oiltanking GmbH – one of the world's largest independent terminal operators.

Oiltanking Tallinn terminal is located at Muuga Harbour.

Address: Õli tn 7, 74115 Tallinn, Estonia
Telephone: +372 6 319 403;
Fax +372 6 319 406
E-mail tallinn@oiltanking.com
www.oiltanking.com

AS Neste Eesti

Light oil products
Storage capacity 26,000 cubic metres

Neste Eesti is owned by NesteOil. NesteOil of today is a production and retail sale company. NesteOil runs businesses in 10 countries. NesteOil is operating two refineries in Finland, at Porvoo and Naantali.

Neste Eesti terminal is located at Muuga Harbour.

Terminal address at Muuga Harbour:
Lasti tee 18, Muuga küla, Viimsi vald, 74001 Harjumaa, Estonia
Telephone: + 372 6 319 330;
Fax +372 6 319 329
Head Office in Estonia:
Sõpruse pst 155, 13417 Tallinn, Estonia
Telephone: +372 6 285 500
Fax +372 6 285 507
E-mail: neste.eesti@nesteoil.com
www.neste.ee

AS Nynas

Bitumen, transformer oils
Storage capacity 14,600 cubic metres

Nynas is owned by Swedish Nynas AB. Nynas has four own refineries: two in Sweden and two in the UK.

Nynas terminal is located at Muuga Harbour.

Address: Õli 5, 74115 Maardu, Estonia
Telephone: + 372 6 319 422;
Fax +372 6 319 423
E-mail info@nynas.ee
www.nynas.com

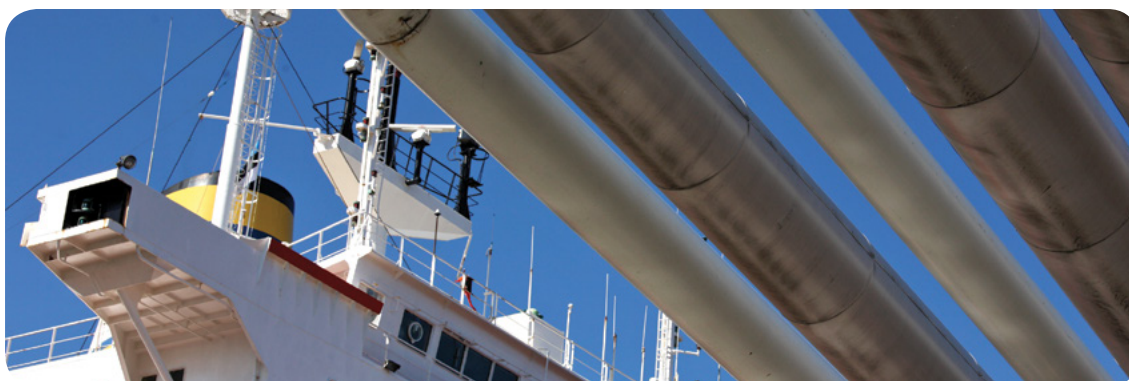
PALDISKI SOUTH HARBOUR

AS Alexela Terminal

Light oil products, petroleum chemicals, LPG
Storage capacity 345,900 cubic metres
petroleum and petroleum chemicals +
12,000 cubic metres LPG

Alexela Terminal is located at Paldiski South Harbour.

Address: Rae põik 6, 76806 Paldiski, Estonia
Telephone: +372 679 0999;
Fax: +372 679 0998
E-mail terminal@alexelaterminal.ee
www.alexelaterminal.ee



Port of Tallinn's Liquid Bulk Development 2013-2020

Driven by market demand, the aim of the Port of Tallinn in cooperation with operators and developers during the years 2013-2020 is to increase the liquid bulk storage capacity in Muuga and Paldiski South harbours.

At the same time, the Port of Tallinn has set a goal to enter the LNG and/or LPG logistics market in 2013-2020 by creating suitable environment for the construction of gas terminals in the Eastern part of Muuga Harbour.

Tallinn LNG:

independent multi customer open-access LNG terminal in Muuga Harbour

Terminal development is based on a repeatable formula: safe and reliable operations on a competitive basis with flexibility to meet growing market demands.

The LNG terminal in Muuga Harbour (named Tallinn LNG) will be built in two phases. The first phase is expected to be completed in 2016, when a number of smaller storage tanks with a total capacity of up to 3,200 m³ will be in place. At this stage it is envisaged to re-use the existing quay wall to handle vessels carrying up to 75,000 m³ of LNG.

If the market demand will require, it will be possible (in the second phase) to build one or more full containment tanks with the capacity of 90,000 m³ (one tank) to 450,000 m³ and extend the existing breakwater and construct an additional jetty to accommodate vessels up to 217,000 m³.

The possible terminal location is indicated in the sketch map below:



The concept of the terminal is to cover the following areas:

- Security of supply – in the form of long-term capacity reservations for the countries transmission system operators;
- Commercial capacity for the interested gas shippers operating in Estonia, Latvia, Lithuania and Finland;
- Servicing of the off-grid market in Estonia – district heating plants not connected to the network, supplied via trucks;
- Refuelling LNG driven ships via re-loading facilities for bunker barges, which could then bring their cargo to the Old City Harbour in Tallinn or other locations/ports in Estonia or along the Finnish coast.

The project will bring a new supply route from the global LNG market to Estonia and the East Baltic region. In addition it will also enable connection to other European markets through the LNG market.

This implies that Tallinn LNG is in a good position to upgrade and expand to meet increasing demand both from the bunkering segment and for security of supply and commercial players in the region.

LPG Terminal in Muuga Harbour

LPG terminal is planned to be constructed in Muuga Harbour:

- Terminal territory for development is 7.2 ha.
- Existing berth with a length of 196 m and a depth of -11 m.
- Well developed infrastructure accommodating competitive operations – possibility for railroad as well as road transportation.
- Detailed Land Used Plan and Strategic Environment Impact Assessment (SEIA) in effect.

The project envisages construction of an LPG terminal with annual throughput of up to 800,000 t.

The possible terminal location is indicated in the sketch map below:



The current LPG terminal project focuses on shipment of LPG from CIS to Western Europe and Baltic States market.

Port of Tallinn is looking for a strategic partner for the development of an LPG terminal in Muuga Harbour. The LPG terminal operator will enter the cooperation scheme with Port of Tallinn on the basis of a cooperation agreement and a building title contract for the use of land.



Development areas for logistics and production units

The Port of Tallinn proposes free territories beside the port area at **Muuga Harbour** and **Paldiski South Harbour** which are ideal for developing your own logistics or production unit.

Muuga Harbour is the largest and deepest cargo harbour in Estonia. Additional value can be created by using the commodities handled at the harbour as an input to production (metals, galvanizing plant, fertilizers, chemicals, etc.).

The area is also located in a customs-free zone which grants more **flexible and simplified customs procedures**. **No import VAT** is applied to goods imported to be processed and exported from Estonia.

Paldiski South Harbour located is 45 km west of Tallinn, the capital of Estonia. Paldiski South Harbour has become an important stop for the Baltic Sea Ro-Ro shipping lines which generates excellent possibilities for future clients to transport their production/raw material promptly and safely.

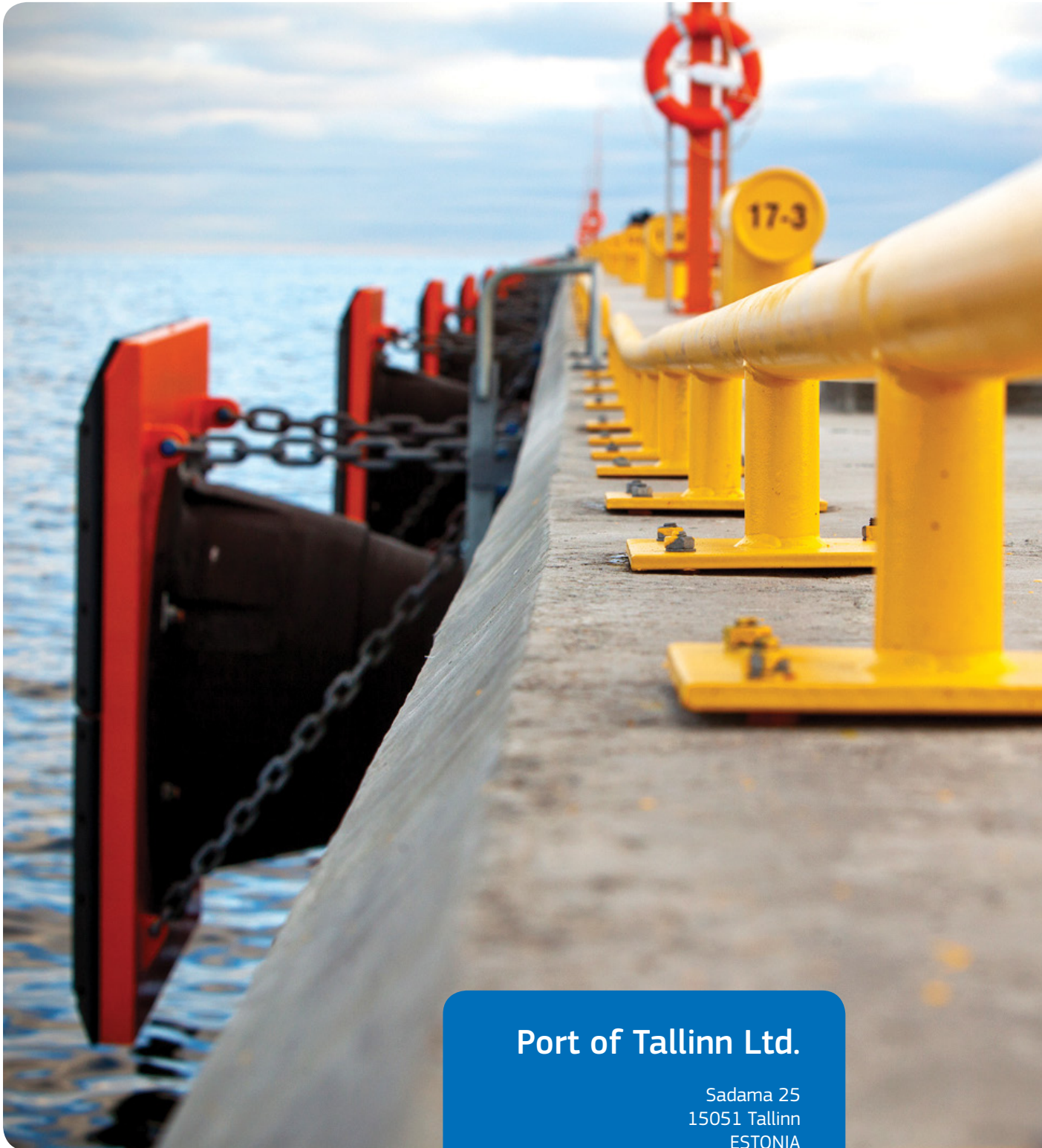
In order to lease those areas to its clients, the Port Authority will conclude long term (up to 99 years) building title agreements. Building title gives the lessee a possession of the land but is also a transferable right for a specified term to own a construction permanently attached to the immovable.

This is an ideal location for warehousing and distribution services providers and commodities producers whose target market is the Eastern Baltic region, including the Russian Federation.

It is also suitable for businesses producing EU commodities from Russian raw materials. The positioning at the port area next to the container, general cargo, Ro-Ro and other modern terminals enables businesses to reduce their transport costs significantly.

Develop your own logistics or production unit beside the port area at Muuga Harbour or Paldiski South Harbour:

- Good location, immediate closeness of the harbour
- Good access to berths and terminals
- Good access to main roads (Peterburi road, Tallinn circuit)
- Great connection to other countries by sea, rail, as well as mainland
- Long-term land use contracts and reliable partner – state enterprise Port of Tallinn
- Potential to be included in the free zone in the future
- All necessary communications up to plot borders:
water supply and sewerage, gas supply, power supply and telecommunications.



PORT OF TALLINN
The Port of Good News

Port of Tallinn Ltd.

Sadama 25
15051 Tallinn
ESTONIA

Ph: +372 631 8555
Fax: +372 631 8166

E-mail: portoftallinn@portoftallinn.com
www.portoftallinn.com

PORT OF TALLINN

The Port of Good News



www.portoftallinn.com